

Rota Ag

Rotavirus antigen

Rotavirus is the most common viral causative agent of diarrhea in pigs, cattle and dogs. Group A and B rotavirus are involved with group A being most prevalent and clinically important, containing several serotypes of differing virulence. All ages are susceptible. If neonatal pigs and cattle do not receive protective levels of maternal antibody, they are likely to develop profuse watery diarrhea in 12-48 hr. More commonly, the infection is endemic in a herd. Usually confirmatory diagnosis is based on histologic demonstration of villous atrophy in the jejunum or electron microscopy demonstration of virion in the intestinal contents. The methods take long time and require high priced specialized equipment and expertise. The Anigen Rapid Rota Ag test kit has been developed to provide fast and reliable test result of Rota antigen in field condition.



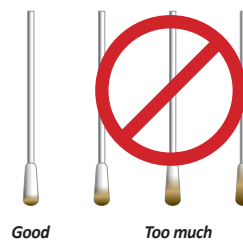
Indications

- Differential diagnosis of bovine and swine diarrheal disease
- Rotavirus field monitoring
- Tentative diagnosis for swift control in outbreak suspected situation

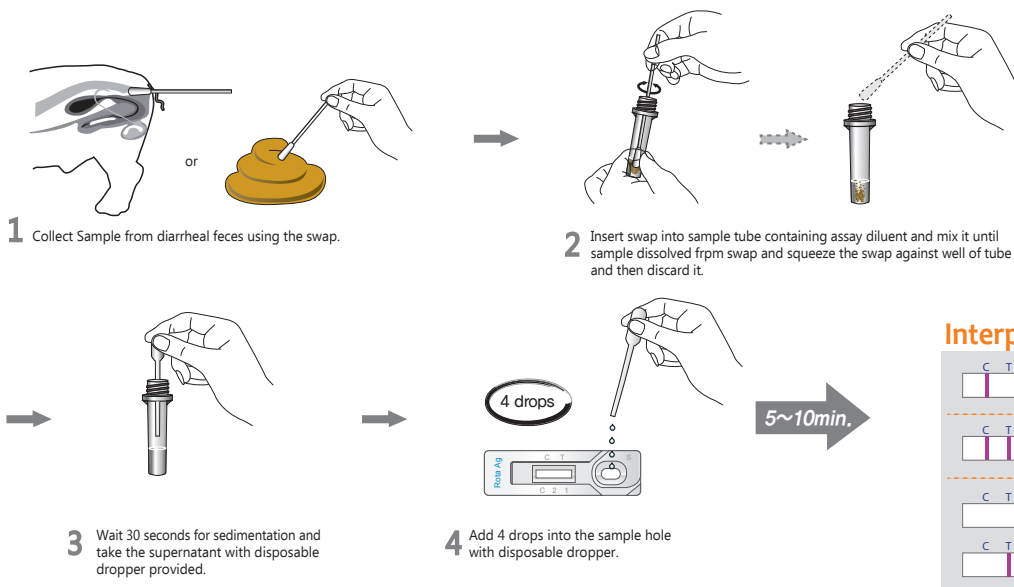
Specifications

- No cross reaction with other etiologic agents
- World's first commercialized rapid test kit for detection of Rotavirus antigen
- Specimen : Diarrheal feces
- Sensitivity: 92% vs. RT-PCR
- Specificity: 99% vs. RT-PCR

[Paper sample amount collected by a swab]



Test Procedures



Ordering Information

Cat. No.	Description	Type	Pack size
RG18-03	Rapid Rota Ag	Device	1 Test x 10/Kit